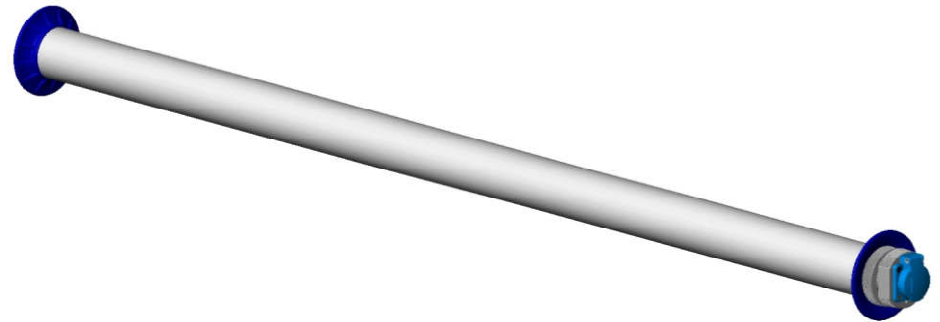


	L1	L2
LED 23W	625 mm	670 mm
LED 33W	905 mm	950 mm
LED 46W	1185 mm	1230 mm
LED 55W	1465 mm	1510 mm

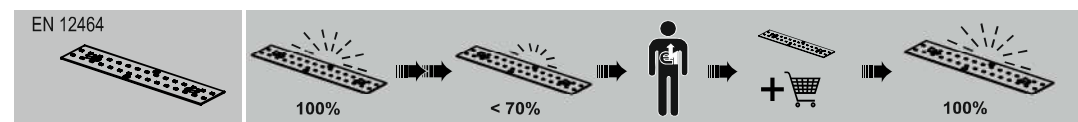
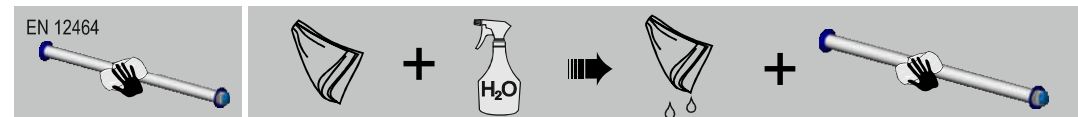


	Spannung voltage	24 V ~ 50-60 Hz 42 V ~ 50-60 Hz 230 V ~ 50-60 Hz		
	Schutzart protection class	IP 54	IP 44	IP 67
Schutzklasse Type of protection	SKL I	SKL III		

Reparatur und Wartung / Repair and Maintenance

ELSPRO Elektrotechnik GmbH & Co. KG
 Kleinhülsen 47
 D-40721 Hilden
 Telefon: +49 (0) 21 03 / 97 10-10
 Telefax: +49 (0) 21 03 / 97 10-80

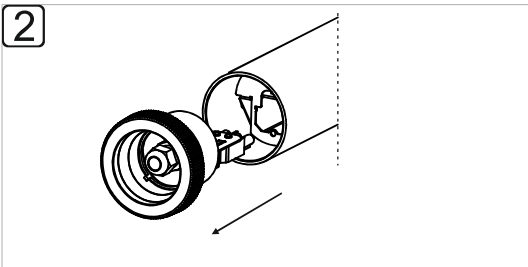
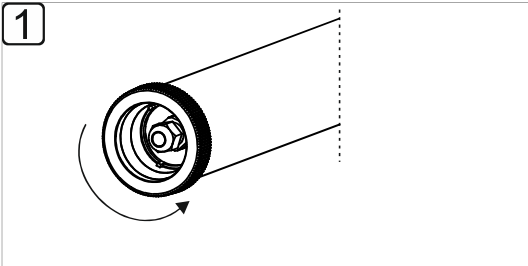
e-mail: info@elspro.de
<http://www.elspro.de>



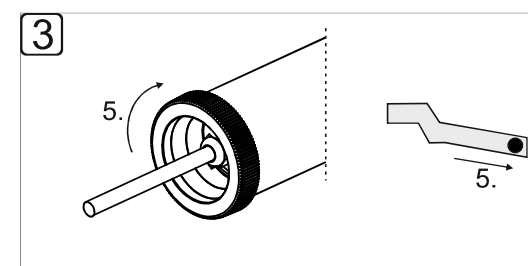
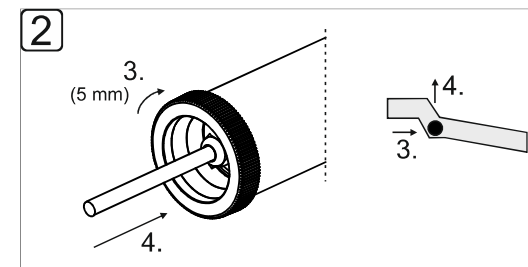
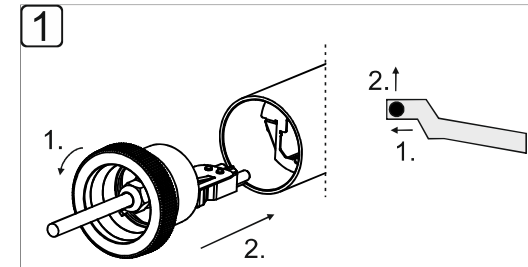
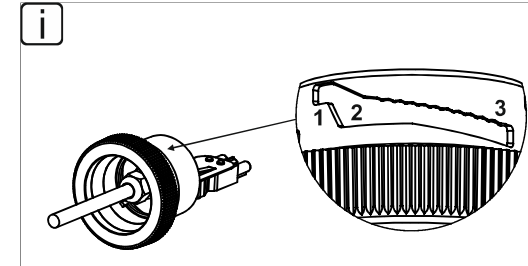
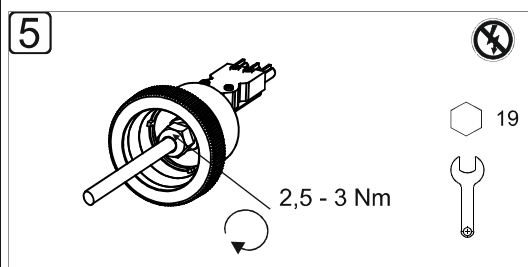
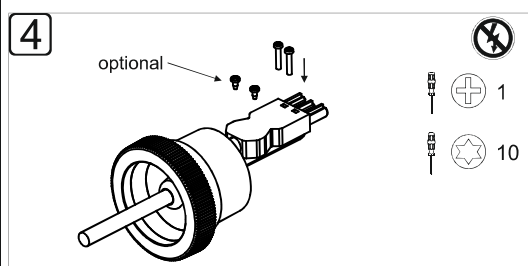
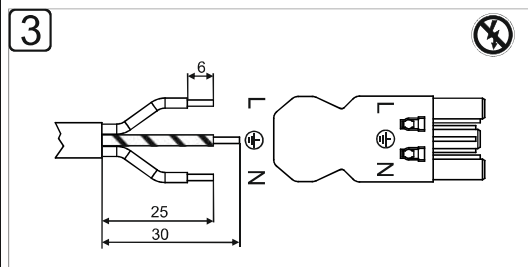
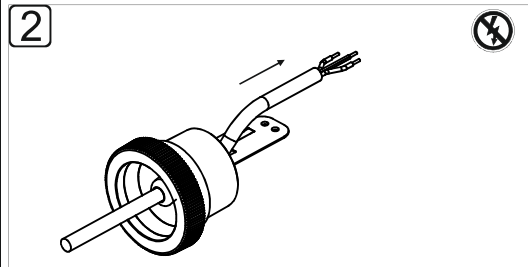
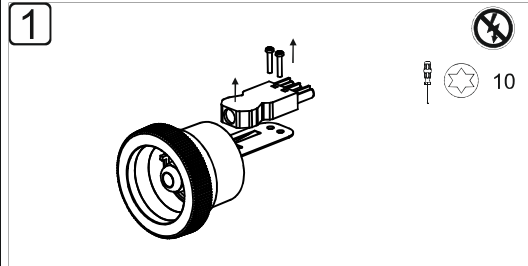
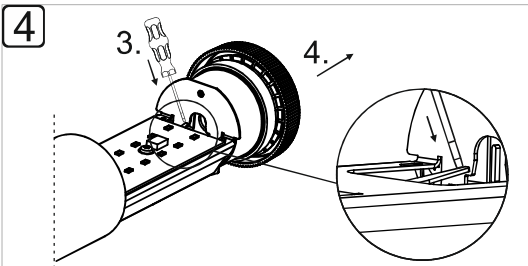
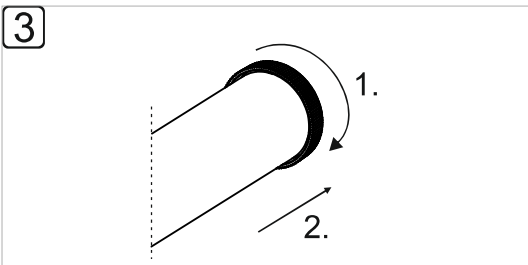
ÖFFNEN / OPEN

INSTALLATION / INSTALLATION

SCHLIESSEN / CLOSE



ÖFFNEN 2. Seite für Durchverdrahtung
OPEN 2nd side for through-wiring



Innenliegender, nicht sichtbarer Ver-
schlussmechanismus /
Inside locking mechanism, not visible

1. Endkappe bis zum Anschlag drehen /
Turn end cap until it stops
2. Endkappe vollständig einführen /
Fully insert end cap

3. Endkappe 5mm im Uhrzeigersinn drehen /
Turn end cap 5mm clockwise
4. Dichtung anpressen / Press down seal

5. Endkappe im Uhrzeigersinn fest
verschließen / close end cap clockwise
tightly